

# PARTY INVITE

IS INVITING YOU TO  
THEIR PARTY AT

**INNOFLATE**

Ethiebeaton Park,  
Dundee,  
DD5 4HB

**DATE**

**RSVP**



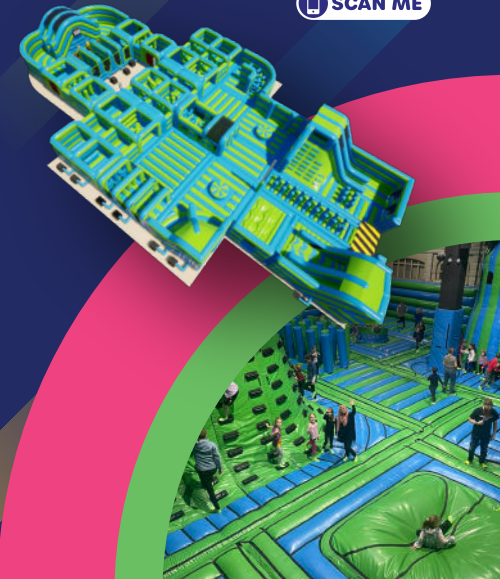
# PARTY INVITE

Bring this invite along with you on the  
day of your party as proof of entry.  
\*Terms & conditions may apply

**INNOFLATE**



SCAN ME



# PARTY INVITE

IS INVITING YOU TO  
THEIR PARTY AT

**INNOFLATE**

Ethiebeaton Park,  
Dundee,  
DD5 4HB

**DATE**

**RSVP**



# PARTY INVITE

Bring this invite along with you on the  
day of your party as proof of entry.  
\*Terms & conditions may apply

**INNOFLATE**



SCAN ME

